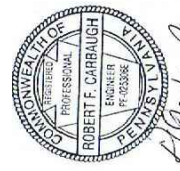


FLOOR PLAN -LIGHTING
SCALE: 3/16" = 1'-0"

PLAN NOTES-THIS DWG ONLY

- ① CONNECT EXIT LIGHT TO LIGHTING CIRCUIT IN SAME ROOM OR AREA (UNSWITCHED SIDE)
- ② EXTEND CIRCUIT AND CONNECT TO INTERIOR EXIT LIGHT
- ③ EXTEND CIRCUIT AND CONNECT TO INTERIOR EMERG. BATTERY LTG. UNIT (12VOLT) IN WASH ROOM.
- ④ CONNECT FAN TO THE ROOM LIGHT FOR ON/OFF CONTROL WITH THE LIGHT.



Carbaugh Engineering Services
Elizabethtown, PA 17022
Phone: (717) 367-7102
Cellular: (717) 201-9657
E-Mail: carbaugh6383@comcast.net

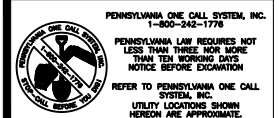
NO.	REVISION NOTES	DATE

BREHM-LEBO ENGINEERING, INC.
CIVIL ENGINEERS • PLANNERS • SURVEYORS • STRUCTURAL ENGINEERS
40 NORTH SECOND STREET
CHAMBERSBURG, PA 17201
PH: (717) 267-1401
FAX: (717) 243-3301

EQUIPMENT BUILDING
CONSTRUCTION DRAWING
FOR
PROPOSED FIRST FLOOR PLAN
SOUTH HAMPTON TWP.
CUMBERLAND COUNTY, PA

Drawn By: HH
Designed By: HH
Checked By: RC
File: 2022-SH-009
Date: 08/18/2023
Scale: 3/16"=1'-0"
Drawing No.
E-1

All documents prepared by Brehm-Lebo Engineering, Inc., are instruments of service with respect to this project. They are not intended or represented to be suitable for reuse by owners, contractors or others on extensions of this Project or on any other project. Any reuse without written verification or adaptation by Brehm-Lebo Engineering, Inc., will be at owners sole risk and without liability or legal exposure to Brehm-Lebo Engineering, Inc., and Owner shall indemnify, and hold harmless, Brehm-Lebo Engineering, Inc., from all claims, damages, losses and expenses arising out of or resulting therefrom.



ID	LIGHT/LOCATION	CAT. NO.	VOLTS	MTG	LUMENS/COLOR	WATTS	NOTES
R1	2X4 LED LIGHT FIXTURE	LITHONIA #CPX 2X4 5000LM 80CRI 40K SWL MIN10 MVOLT	120	RECESSED	5000/40K 40W		
S1	1X8 LED LIGHT FIXTURE	LITHONIA #CLX L96 14000LM SEF WDL MVOLT GZ10 40K 80 CRI	120	SUSPENDED	14000/40K 130W		1
S1.A	1X4 LED LIGHT FIXTURE	LITHONIA #CLX L48 7000LM SEF WDL MVOLT GZ10 40K 80 CRI	120	SUSPENDED	7000/40K 68W		1
S2	1X8 LED LIGHT FIXTURE	LITHONIA #FEM L96 15000L IMAFL MD MVOLT GZ10 40K 80CRI	120	SUSPENDED	15000/40K 110W		1
C1	1X8 LED LIGHT FIXTURE	LITHONIA ##CLX L96 10000LM SEF WDL MVOLT GZ10 40K 80 CRI	120	CIEILING	10000/40K 65W		
C2	1X4 LED LIGHT FIXTURE	LITHONIA ##CLX L48 4000LM SEF WDL MVOLT GZ10 40K 80 CRI	120	CIEILING	4000/40K 30W		
W1	WALL LED LIGHT FIXTURE	LITHONIA #WPX2 LED 40K MVOLT PE DBLX (PHOTOCONTROL)	120	WALL	1950/40K 47W		2

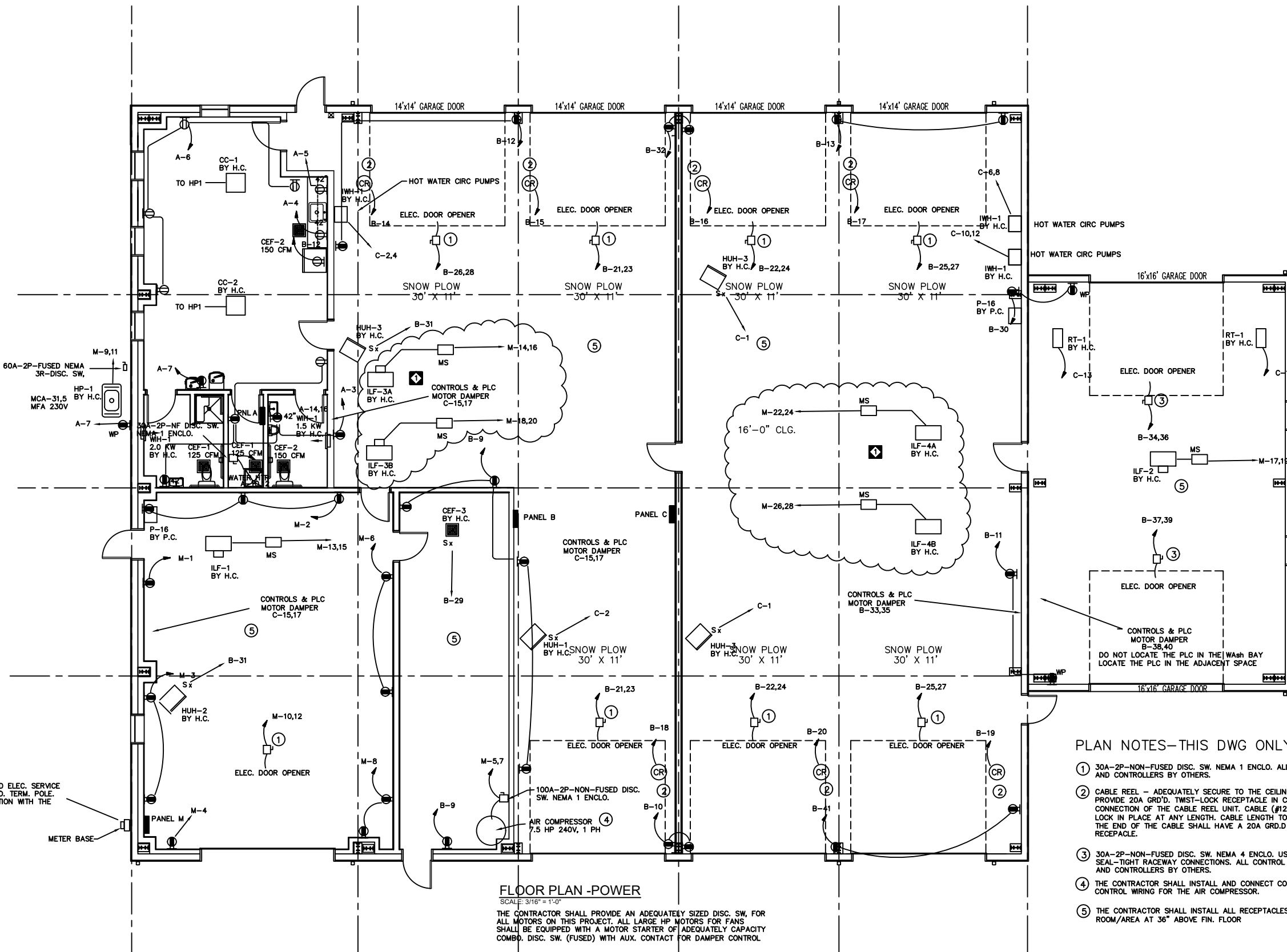
1. SUSPEND LIGHT FIXTURES TO 15'-0" ABOVE FLOOR TO THE BOTTOM OF THE LIGHT, THE MOUNTING HEIGHTS SHALL BE AS INDICATED UNLESS DIRECTED OTHERWISE. BY THE OWNER, THE LIGHT FIXTURES SHALL BE SUSPENDED WITH AIRCRAFT CABLE, ADEQUATELY SECURED TO THE CEILING STEEL STRUCTURE. POWER DROPS TO THE LIGHT FIXTURE SHALL BE DONE USING MC CABLE.
2. MOUNT LIGHT FIXTURE ON WALL TO 15'-0" ABOVE FLOOR
3. MOUNT EMERGENCY BATTERY LIGHT UNIT ABOVE THE FLOOR TO 12'-0" ABOVE FLOOR TO THE BOTTOM OF THE UNIT, UNLESS NOTED OTHERWISE.
4. MOUNT ON WALL ABOVE DOOR OR OPENING, IF CEILING HT. IS LESS THAN 9'-6"
MOUNT ON THE CEILING.
5. MOUNT ON WALL TO 8'-0" ABOVE FLOOR

SYM.	DESCRIPTION	MOUNTING	NOTES
	EMERGENCY LIGHTING BATTERY UNIT, LED TYPE WITH 2-LIGHTS. LITHONIA #ELM6L UVOLT LTP HO SD	WALL	3
	LED EXIT LIGHT WITH 2-LIGHTS LITHONIA #LHQM LED R HO SD (DIRECTIONAL ARROW WHERE INDICATED)	WALL/CEILING	4
	LED REMOTE EMERGENCY LIGHT (DUAL LIGHTS) LITHONIA #ELA T QWP L0309 (COORDINATE VOLTAGE W/SOURCE)	WALL	5
	EMERGENCY LIGHTING BATTERY UNIT (WET LOCATION), LED TYPE WITH 2-LIGHTS. BARRON #NXFX 12 15 WH G2	WALL	3
	LED EXIT LIGHT (WET LOCATION) BARRON #NXFX 1 WB R WH G2	WALL	4
	LED REMOTE EMERGENCY LIGHT (DUAL LIGHTS) BARRON #NXFR 2 WH (12VOLTS)	WALL	5

PENNSYLVANIA ONE CALL SYSTEM, INC.
1-800-242-1776

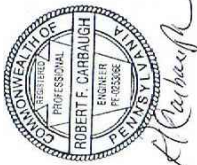
PENNSYLVANIA LAW REQUIRES NOT
LESS THAN THREE NOR MORE
THAN TEN WORKING DAYS
NOTICE BEFORE EXCAVATION

REFER TO PENNSYLVANIA ONE CALL
SYSTEM, INC.
UTILITY LOCATIONS SHOWN
HEREON ARE APPROXIMATE.



PLAN NOTES--THIS DWG ONLY

- 30A-2P-NON-FUSED DISC. SW. NEMA 1 ENCL. ALL CONTROL WIRING AND CONTROLLERS BY OTHERS.
- CABLE REEL - ADEQUATELY SECURE TO THE CEILING STEEL STRUCTURE. PROVIDE 20A GRD'D. TWIST-LOCK RECEPTACLE IN CEILING FOR CONNECTION OF THE CABLE REEL UNIT. CABLE (#12/3) PULL DOWN AND LOCK IN PLACE AT ANY LENGTH. CABLE LENGTH TO BE 18 FT (MIN). THE END OF THE CABLE SHALL HAVE A 20A GRD'D SIMPLEX RECEPTACLE.
- 30A-2P-NON-FUSED DISC. SW. NEMA 4 ENCL. USE FLEXIBLE SEAL-TIGHT RACEWAY CONNECTIONS. ALL CONTROL WIRING AND CONTROLLERS BY OTHERS.
- THE CONTRACTOR SHALL INSTALL AND CONNECT CONTROLS AND CONTROL WIRING FOR THE AIR COMPRESSOR.
- THE CONTRACTOR SHALL INSTALL ALL RECEPTACLES IN THIS ROOM/AREA AT 36" ABOVE FIN. FLOOR



Carbaugh Engineering Services
Elizabethtown, PA 17022
Phone: (717) 367-7102
Cellular: (717) 201-9657
E-Mail: carbaugh6383@comcast.net

NO.	REVISION NOTES	DATE
1	ADD (2) EX. FANS	09/06/23

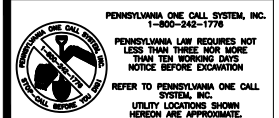
BREHM-LEBO ENGINEERING, INC.
CIVIL ENGINEERS • PLANNERS • SURVEYORS • STRUCTURAL ENGINEERS
40 NORTH SECOND STREET
CHAMBERSBURG, PA 17201
PH: (717) 267-1401
FAX: (717) 243-3301

EQUIPMENT BUILDING
CONSTRUCTION DRAWING
FOR
PROPOSED FIRST FLOOR PLAN
SOUTH HAMPTON TWP.
CUMBERLAND COUNTY, PA

Drawn By: HH
Designed By: HH
Checked By: RC
File: 2022-SH-009
Date: 08/18/2023
Scale: 3/16"=1'-0"
Drawing No.

E-3

All documents prepared by Brehm-Lebo Engineering, Inc., are instruments of service with respect to this project. They are not intended or represented to be suitable for reuse by owners, contractors or others on extensions of this Project or on any other project. Any reuse without written verification or adaptation by Brehm-Lebo Engineering, Inc., will be at owners sole risk and without liability or legal exposure to Brehm-Lebo Engineering, Inc., and Owner shall indemnify, and hold harmless, Brehm-Lebo Engineering, Inc., from all claims, damages, losses and expenses arising out of or resulting therefrom.





All documents prepared by Brehm-Lebo Engineering, Inc., are instruments of service with respect to this project. They are not intended or represented to be suitable for reuse by owners, contractors or others on extensions of this Project or on any other project. Any reuse without written verification or adaptation by Brehm-Lebo Engineering, Inc., will be at owners sole risk and without liability or legal exposure to Brehm-Lebo Engineering, Inc., and Owners shall indemnify, and hold harmless, Brehm-Lebo Engineering, Inc., from all claims, damages, losses and expenses arising out of or resulting therefrom.



PENNSYLVANIA ONE CALL SYSTEM, INC.
1-800-242-1776

**PENNSYLVANIA LAW REQUIRES NOT
LESS THAN THREE NOR MORE
THAN TEN WORKING DAYS
NOTICE BEFORE EXCAVATION**

**REFER TO PENNSYLVANIA ONE CALL
SYSTEM, INC.**

**UTILITY LOCATIONS SHOWN
HEREON ARE APPROXIMATE.**

ALL CIRCUIT SIZES ARE 2 #12 & 1 #12G-3/4"C, UNLESS INDICATED OTHERWISE.

ALL CIRCUIT SIZES ARE 2 #12 & 1 #12G-3/4"C, UNLESS INDICATED OTHERWISE

ALL CIRCUIT SIZES ARE 2 #12 & 1 #12G-3/4"C, UNLESS INDICATED OTHERWISE.

ALL CIRCUIT SIZES ARE 2 #12 & 1 #12G-3/4"C, UNLESS INDICATED OTHERWISE

BREHM-LEBO ENGINEERING, INC.

STRUCTURAL ENGINEERS
40 NORTH SECOND STREET
CHAMBERSBURG, PA 17201
PH: (717) 267-1401
FAX: (717) 243-3301

CIVIL ENGINEERS
17 STATE AVENUE
CARLISLE, PA 17013
PH: (717) 243-4114
FAX: (717) 243-3301

EQUIPMENT BUILDING

CONSTRUCTION DRAWING

FOR

PROPOSED FIRST FLOOR PLAN

SOUTH HAMPTON TWP. CUMBERLAND COUNTY, PA

Drawn By: HH
Designed By: HH
Checked By: RC
File: 2022-SH-00
Date: 08/18/2022
Scale: 3/16"=1'-0"
Drawing No.

E-4



PENNSYLVANIA ONE CALL SYSTEM, INC.
1-800-242-1776

**PENNSYLVANIA LAW REQUIRES NOT
LESS THAN THREE NOR MORE
THAN TEN WORKING DAYS
NOTICE BEFORE EXCAVATION**

**REFER TO PENNSYLVANIA ONE CALL
SYSTEM, INC.**

**UTILITY LOCATIONS SHOWN
HEREON ARE APPROXIMATE.**

THE CONTACTORS SHALL BE ALLEN BRADLEY SOLID STATE TYPE, 2-POLE, 20A, 120VAC NEMA SIZE 1 OR 4 ENCLO, 24VAC COIL AS INDICATED, INDICATING LED'S FOR ON, ON FRONT COVER, ALLEN BRADLEY BULLETIN 156-C.

E-5

