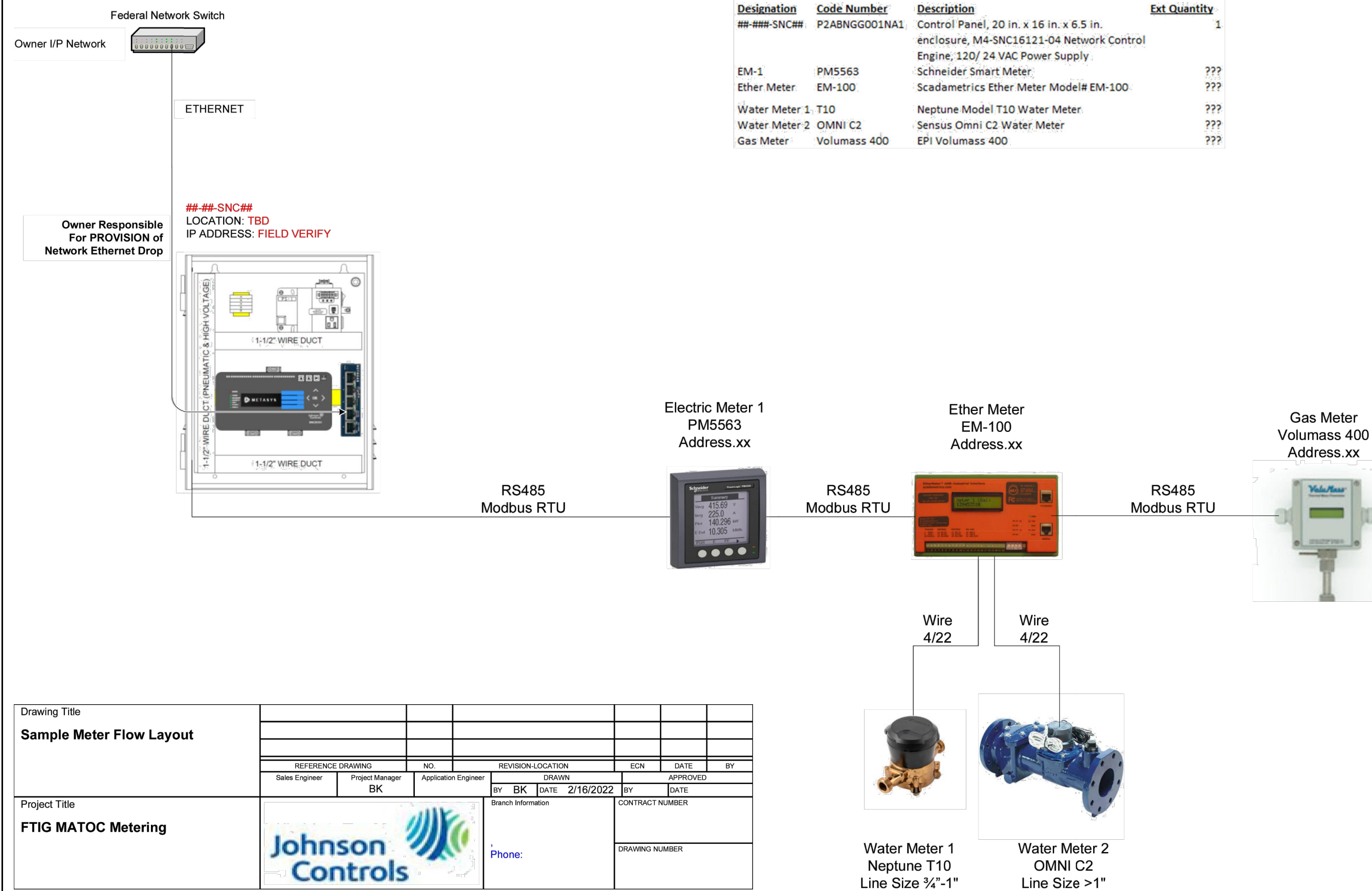
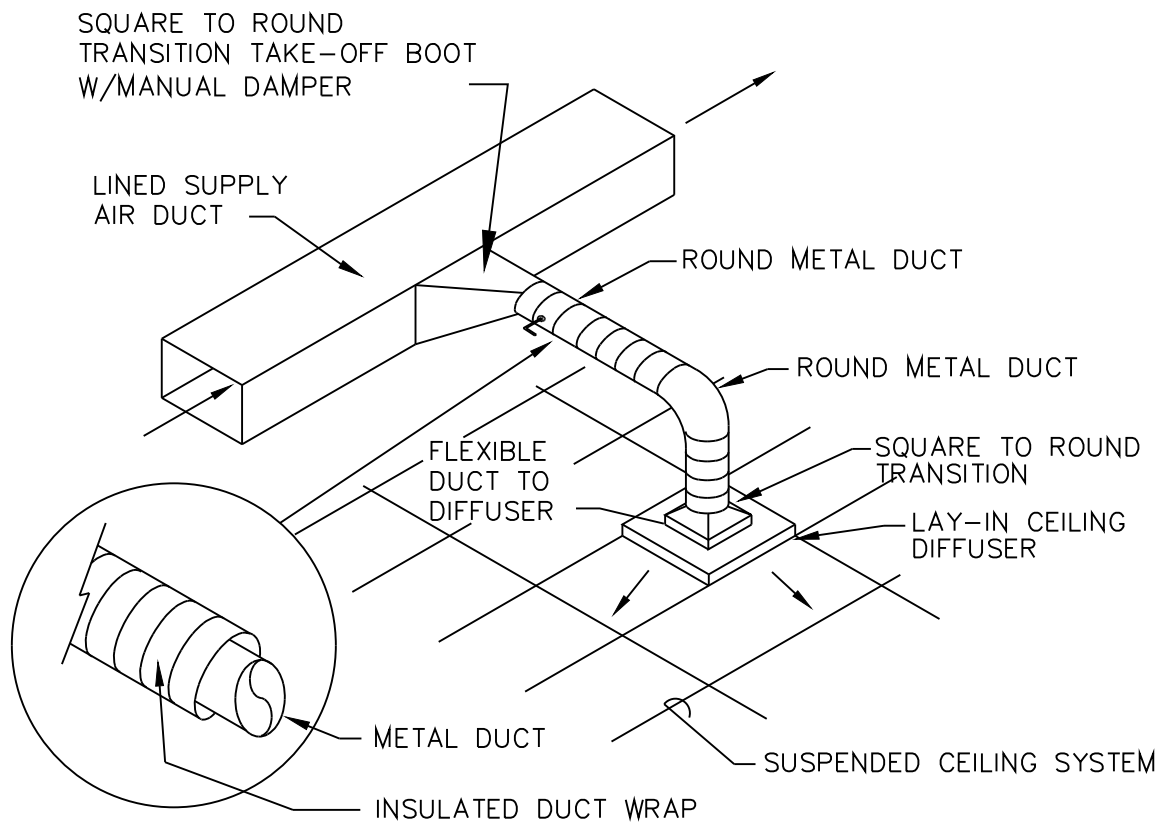


Sample Meter Flow Layout



BUILDING MANAGEMENT SYSTEM - CONTROLS

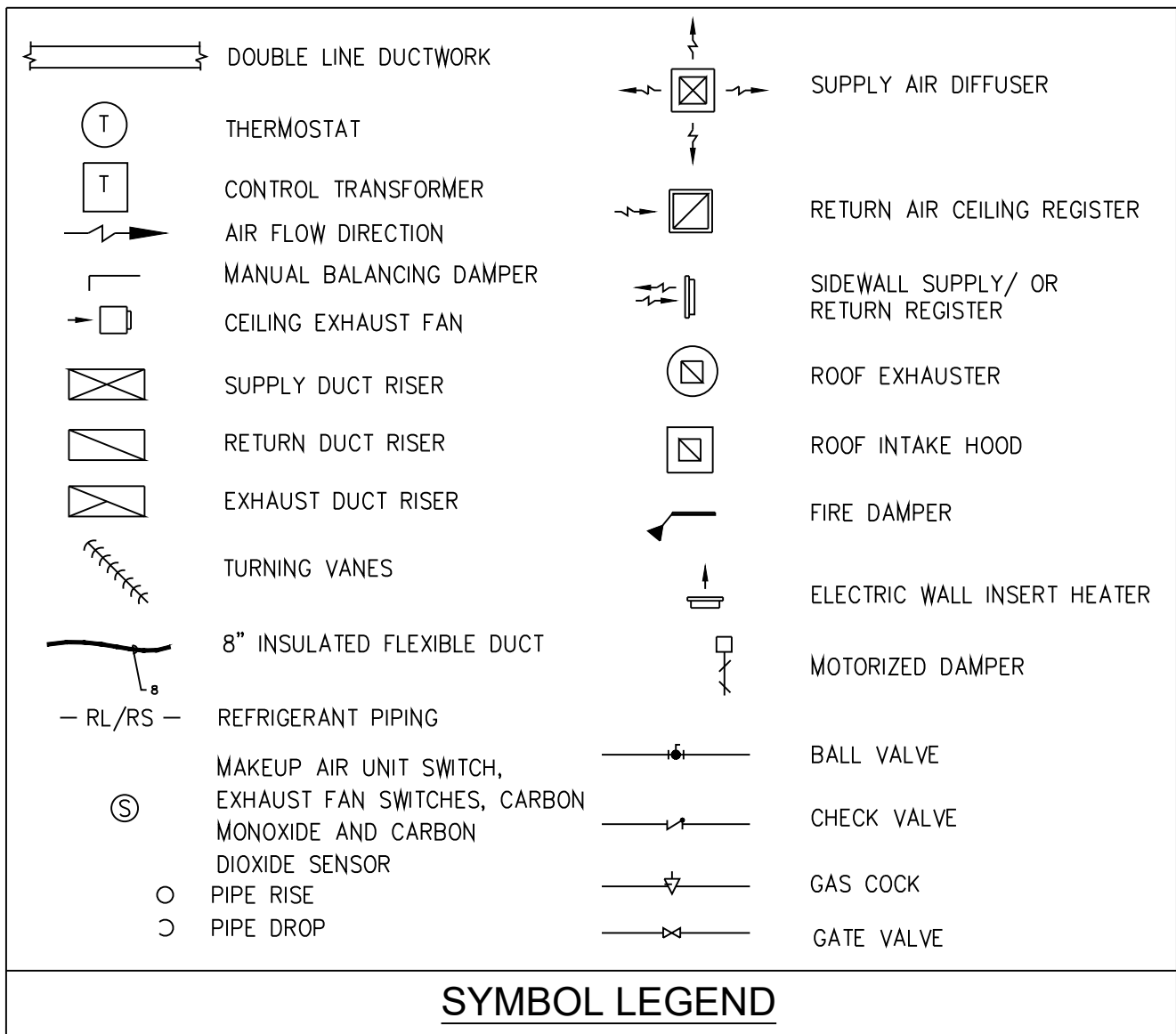
1. PROVIDE BUILDING MANAGEMENT SYSTEM (BMS) CONTROL PANEL. SYSTEM SHALL BE JOHNSON CONTROLS METASYS AND BE AN EXTENSION OF THE EXISTING BASE-WIDE BUILDING MANAGEMENT SYSTEM.
2. CONTACT CHRISTOPHER BARLOW AT JCI, 717-712-1871. BMS WILL INTERFACE TO AC SYSTEMS FOR REMOTE MONITORING. BMS CONTRACTOR WILL FURNISH GAS SUBMETER MODEL AL-800 AND IMAC PULSMATIC TRANSMITTER (WATER SUBMETER). CONNECT ELECTRIC SMART METER TO BMS.



NOTE: ROUND METAL DUCT SHALL BE WRAPPED WITH 1" FIBERGLASS DUCT WRAP INSULATION. SIZE OF ROUND METAL DUCT INTO DAMPER IS TYPICALLY LESS THAN THAT GOING OUT OF THE DAMPER. SEE SCHEDULE.

TYPICAL BRANCH DUCT CONNECTION DETAIL

NO SCALE



DUCTLESS A/C FAN COIL UNIT SCHEDULE (ARI CAPACITIES)										
SYMBOL	BASIS OF DESIGN		SUPPLY FAN		COOLING CAPACITY DATA			HEATING CAPACITY DATA		
	MFG.	MODEL NO.	TOTAL C.F.M.	TOTAL M.B.H.	D.B.	E.A.T.	W.B.	TOTAL M.B.H.	D.B.	E.A.T.
FC-1	YORK	DHP18NWB21S	471	20.0	80	67		23.4	70	70
								3.15		230/60/1

RADIANT HEATER SCHEDULE								
SYMBOL	LOCATION	BASIS OF DESIGN		TYPE	TOTAL WATTS	VOLTAGE	UNIT DIMENSIONS DEPTH X WIDTH X HEIGHT	REMARKS
		MFG.	MODEL NO.					
RH-1	RESTROOM	BERKO	CP378	CEILING	375	120V-1ø	1" x 24" x 24"	① ②

REMARKS

① PANEL SHALL BE PROVIDED WITH MS26 LINE VOLTAGE THERMOSTAT AND THERMAL OVERLOAD PROTECTION. HEATER AND T-STAT INSTALLED BY .2 CONTRACTOR WIRED BY .4 CONTRACTOR

② PROVIDE ORF2424 RECESS MOUNTING FRAME

TYPE

LI = T-BAR LAY-IN

DUCTLESS CONDENSING UNIT SCHEDULE (ARI CAPACITIES)											
SYMBOL	BASIS OF DESIGN		COOLING CAPACITY		HEATING CAPACITY		ELECTRICAL CHARACTERISTICS				REMARKS
	MFG.	MODEL NO.	TOTAL MBH	S.E.E.R.	KW	TOTAL MBH	C.O.P.	KW	R.L.A.	M.S.C.	
CU-2	YORK	DHP18CSB21S	20.0	16.0	2.2	23.4	-	-	14.7	-	16.0
									25.0		230/60/1 ① ② ③

REMARKS

① UNIT SHALL BE PROVIDED WITH THE FOLLOWING ACCESSORIES: LINE SET COVERS, TIME DELAY RELAY, LOW AMBIENT CONTROLLER, WINTER START CONTROL, EVAPORATOR DEFROST CONTROL KIT, HIGH/LOW PRESSURE CUT-OUT SWITCH.

② INSTALL HEAT PUMP ON CONCRETE PAD. CONTRACTOR SHALL FURNISH AND INSTALL REFRIGERANT LINE SET AND ALL ACCESSORIES AND HANGERS AS REQUIRED TO BUILDING.

③ PROVIDE MICROBLUE DIAMOND CONDENSATE PUMP

SPLIT SYSTEM AIR HANDLER SCHEDULE										
SYMBOL	SERVES	TOTAL C.F.M.	ELECTRICAL DATA			NATURAL GAS FURNACE DATA				
			FAN	VOLTAGE		INPUT	OUTPUT	AFUE	TEMP RISE	ROWS
AHU-1	OFFICES	1980	15	20	120/1	100	78	95.5	60	-

SPLIT SYSTEM CONDENSING UNIT SCHEDULE									
SYMBOL	COOLING CAPACITY - 80°/67°		COOLING DATA			ELECTRICAL DATA		REMARKS	
	TOTAL MBH	SENSIBLE MBH	NOM. TONS	E.E.R.	COND. E.A.T.	C.U. M.C.A.	M.O.C.P.		
CU-1	61.9	42.0	5.0	12.50	95	33.9	50	230/1/60	① ②

REMARKS

① BASIS OF DESIGN: YORK MODEL #AL21B6021S / #TPLC100C20MP13 OR APPROVED EQUAL. MOUNT AIR HANDLER ON A MAINTENANCE PAD ON THE FLOOR AS PER MANUFACTURER'S WRITTEN INSTRUCTIONS. PROVIDE MAINTENANCE PAD, SUPPORTS AND VIBRATION ISOLATION AS REQUIRED.

② FURNISH AND INSTALL UNIT WITH THE FOLLOWING ACCESSORIES:

A. CONDENSATE DRAIN WITH 2" DEEP TRAP.

B. WEATHERPROOF DISCONNECT SWITCH FOR C.U.

C. DISCONNECT FOR AIR HANDLER

D. PROVIDE WITH LOW AMBIENT KIT.

EXHAUST FAN SCHEDULE									
SYMBOL	SERVING	BASIS OF DESIGN		TYPE	C.F.M.	E.S.P.	ELECTRICAL DATA		REMARKS
		MFG.	MODEL NO.				FAN MOTOR M.O.P.	VOLTAGE	
EF-1	LATRINE	GREENHECK	SP-B150	C	150	0.10	15	115V-1ø	① ②
EF-2	LATRINE	GREENHECK	SP-B80	C	75	0.10	15	115V-1ø	① ②

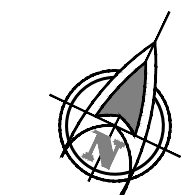
REMARKS

① PROVIDE WITH INTERNAL BACKDRAFT DAMPER, DISCONNECT SWITCH, HANGING ISOLATORS AND WC-6 DUCT TRANSITION.

② PROVIDE WITH GREENHECK MODEL 5WSSC SPEED CONTROL (OR APPROVED EQUAL) FOR BALANCING TO SCHEDULED CFM.

TYPE

C = CEILING TYPE



REFERENCE NORTH

CONTRACTOR SHALL FIELD VERIFY ALL DIMENSIONS. VARIANCE FROM CONTRACT DOCUMENTS NOT PERMITTED WITHOUT BUREAU OF ENGINEERING AND ARCHITECTURE APPROVAL.				DRAWN BY B. TOEVS	DATE 01 DEC 2023	DRAWING NO. M.2.1
CHECKED BY				SCALE AS NOTED		

NO.			DESCRIPTION	DATE
REVISIONS				
Professional's Signature _____ Date _____				
COMMONWEALTH OF PENNSYLVANIA DEPT. OF MILITARY & VETERANS' AFFAIRS ANNVILLE, PENNSYLVANIA 17003				
DESIGN PROFESSIONALS: OFFICE OF FACILITIES AND ENGINEERING BUREAU OF DESIGN AND PROJECT MANAGEMENT BLDG. 0-10, FORT INDIANTOWN GAP ANNVILLE, LEBANON COUNTY, PENNSYLVANIA				
PROJECT NO. 42200129				
BUILDING RENOVATION BLDG 12-07 FORT INDIANTOWN GAP ANNVILLE, LEBANON COUNTY, PENNSYLVANIA				
SCHEDULES & DETAILS				
DRAWN BY B. TOEVS			DATE 01 DEC 2023	DRAWING NO. M.2.1
CHECKED BY			SCALE AS NOTED	